



LOGIQ™ E10

Empowering you to make the difference.



Next-generation, leadership ultrasound...
always ready, always by your side

The LOGIQ E10 provides a full suite of advanced imaging tools and harnesses artificial intelligence to drive workflow productivity. Built on the leading-edge A to A digital platform, the LOGIQ E10 is designed to address today's needs while keeping your department at the forefront of clinical imaging.

EMPOWERING Confident Diagnosis

The LOGIQ E10 system provides a new standard in imaging, so clinicians can scan, diagnose, and treat a wide range of patients across a broad spectrum of conditions.



Exceptional imaging: Next-generation cSound™ Architecture—now with new Advanced Speckle Reduction Imaging (SRI)—delivers images of exceptional uniformity, from near to far field. The system acquires and reconstructs data with 48x the data throughput and 10x the processing power of our previous systems. There's no need to adjust the focus—the information you need is there, instantly.

E-Series and XDclear™ probes: Powerful high fidelity and broad bandwidth produce high resolution images whether scanning superficial or deep targets, or at any point in between.

Optimized for small vessel imaging: An innovative new tool, Radiantflow™, provides a near-3D look when visualizing blood flow in tiny vessels, especially when combined with Micro Vascular Imaging (MVI).



EMPOWERING Comprehensive Tools

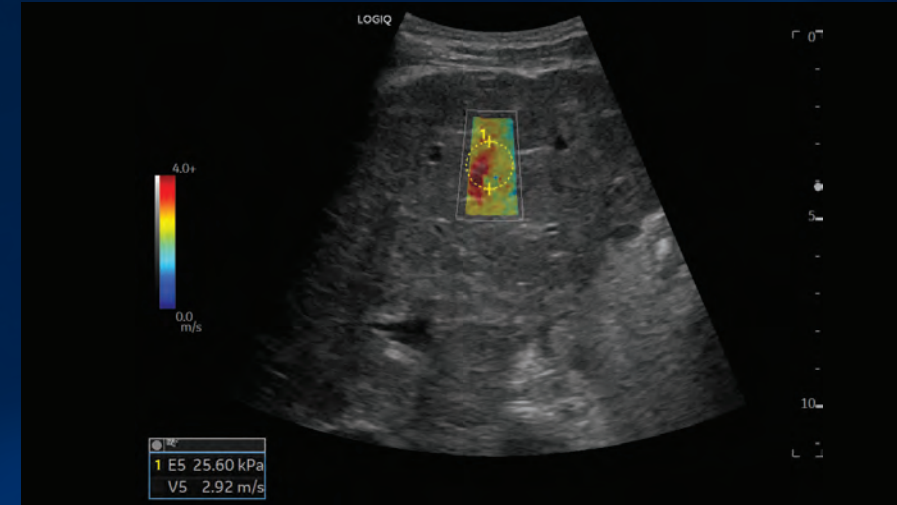
The LOGIQ E10 helps improve the precision and speed of diagnosis, guidance and treatment in nearly every clinical scenario, including abdominal imaging; interventional; management of liver disease; breast, small parts and musculoskeletal imaging; and OB/GYN, pediatric and cardiovascular studies. Available tools include:

2D Shear Wave & Strain Elastography: Determine qualitative, quantitative and semi-quantitative assessment of tissue elasticity. Now available with a Shear Wave Elastography Quality Indicator to support confident measurements.

Ultrasound-Guided Attenuation Parameter (UGAP): Quantifies liver steatosis to aid in early identification and monitoring of patients with NAFLD, NASH or ASH.

Contrast-enhanced ultrasound (CEUS): Visualize tissue structure and lesion vascularity clearly to optimize diagnostic accuracy.

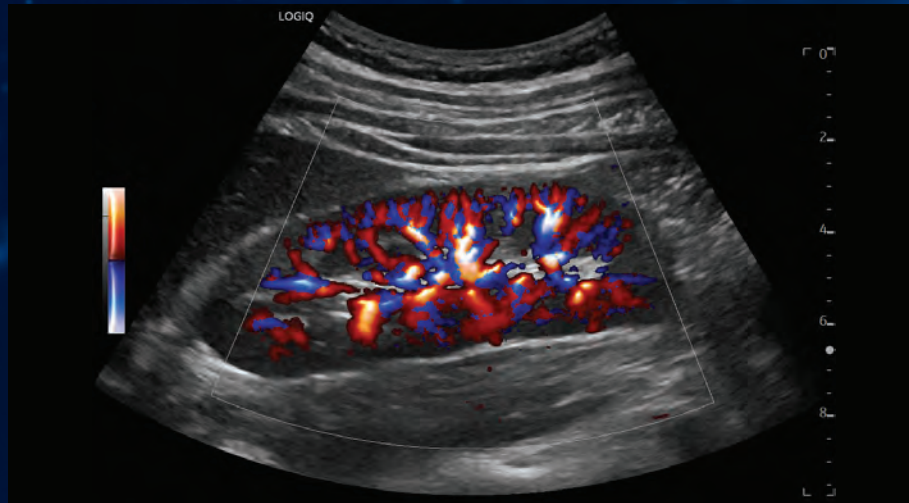
Photo Assistant app: Acquire photos of relevant anatomy via an Android™ smart device and include them with the clinical images in the report, providing valuable context.



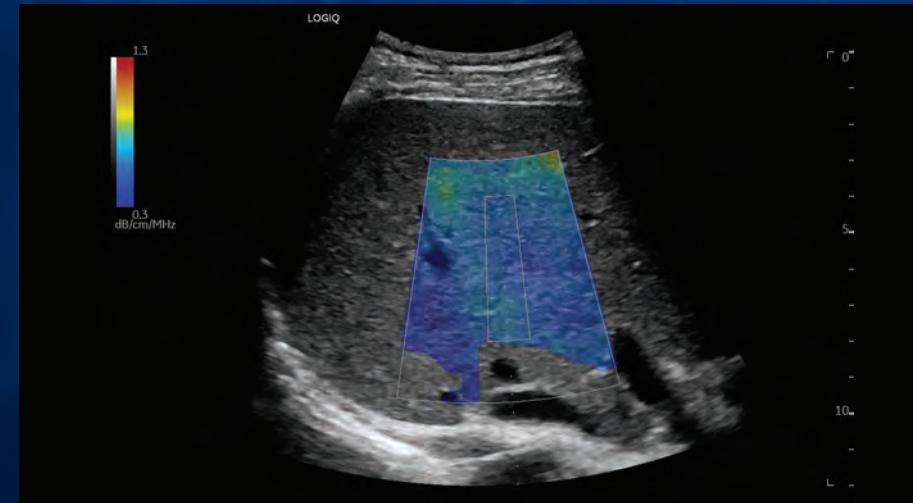
Liver 2D Shear Wave Elastography, C1-6-D



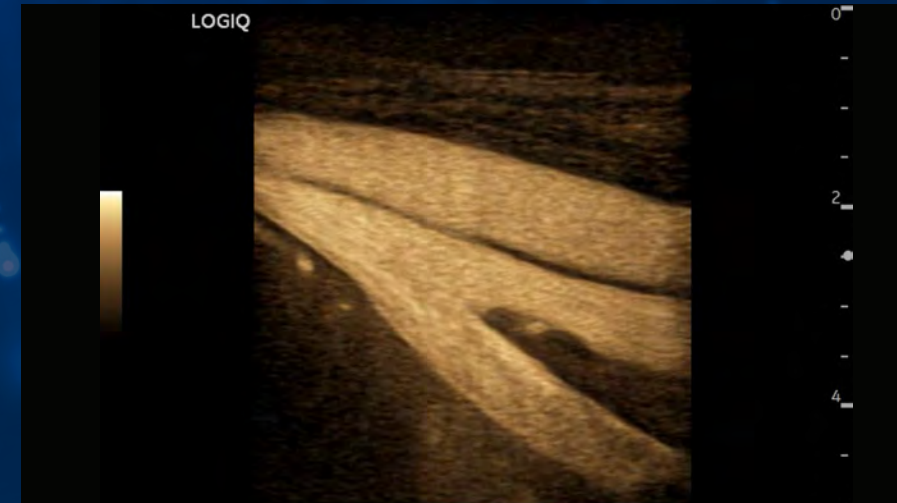
Neonatal brain with MVI & Radiantflow, L2-9-D



Radiantflow color imaging of kidney, C1-6-D



Liver UGAP, C1-6-D



Micro B-Flow, L2-9-D



Liver, C1-6-D

EMPOWERING Concise Workflow

The LOGIQ E10 is a digitally advanced system that leverages the latest digital advances, including the power of artificial intelligence (AI), to help improve exam efficiency and user productivity.



AI-based tools, powered by Edison

- **Auto Doppler Assistant:** Automatically adjusts the color box and angle, so users can complete exams in 20% less time with 50% fewer keystrokes¹
- **Auto Lesion Segmentation:** Automatically traces lesion boundaries and generates two-dimensional measurements with just a few keystrokes
- **OB Measure Assistant:** Reduces keystrokes and enhances reproducibility by automating key fetal measurements



Productivity enhancers

- **EZ Imaging:** Enhances workflow with customizable probe pre-sets, simplified touch panel to reduce operator interactions, and quick patient set-up, resulting in 32% less time with 38% fewer keystrokes¹
- **Scan Assistant:** Customizable automation helps reduce keystrokes and exam times
- **Compare Assistant:** View a prior study – ultrasound, mammography, CT or MR – and current images together in real time via a split screen on the monitor
- **Start Assistant:** Automatically launches the preferred setting when the user selects an exam description
- **Hepatic Assistant:** Combines 2D Shear Wave Elastography and UGAP in a single exam with the push of a button



Streamlined functionality

- **Ease of operation:** The user interface has easy-to-reach controls, an adjustable floating keyboard, and an articulating monitor that adjusts for viewing both on- and off-axis
- **Robust DICOM® connectivity:** Allows images to be saved to a central location and reviewed alongside other imaging modalities
- **Tricify™ image management:** Optional cloud-based solution to share images directly and securely from your system



Smart Investment

Ultrasound systems for today, platform for tomorrow

The LOGIQ E10 provides exceptional imaging and full-featured versatility to support your radiology department now and for years to come.

A to A digital platform: From awareness to assistance, stay at the forefront of clinical imaging with our A to A digital platform, specifically engineered so you can add next-generation capabilities in the years ahead.

SonoDefense: Our multi-layer approach to cybersecurity helps keep the system safe and functional in the face of cyberthreats and helps protect patient data from unauthorized access.

Digital support: Wide choice of efficiency tools to help users, administrators, and operations staff improve productivity, including remote preset management, performance analytics, software/security updates, live clinical training, and advanced system diagnostics.



Sonda ML4-20-D



© GE, 2022

GE Healthcare reserves the right to make changes in specifications and features shown herein, or discontinue the product described at any time without notice or obligation. Contact your GE Healthcare representative for the most current information. GE, the GE Monogram, LOGIQ, cSound, Radiantflow, and XDclear are trademarks of GE. DICOM is a trademark of National Electrical Manufacturers Association. Tricefy trademarks are registered trademarks of Trice Imaging, Inc. Android is a trademark of Google LLC. GE Healthcare, a division of GE. GE Medical Systems, Inc., doing business as GE Healthcare.

January 2022
JB18388XX
Global